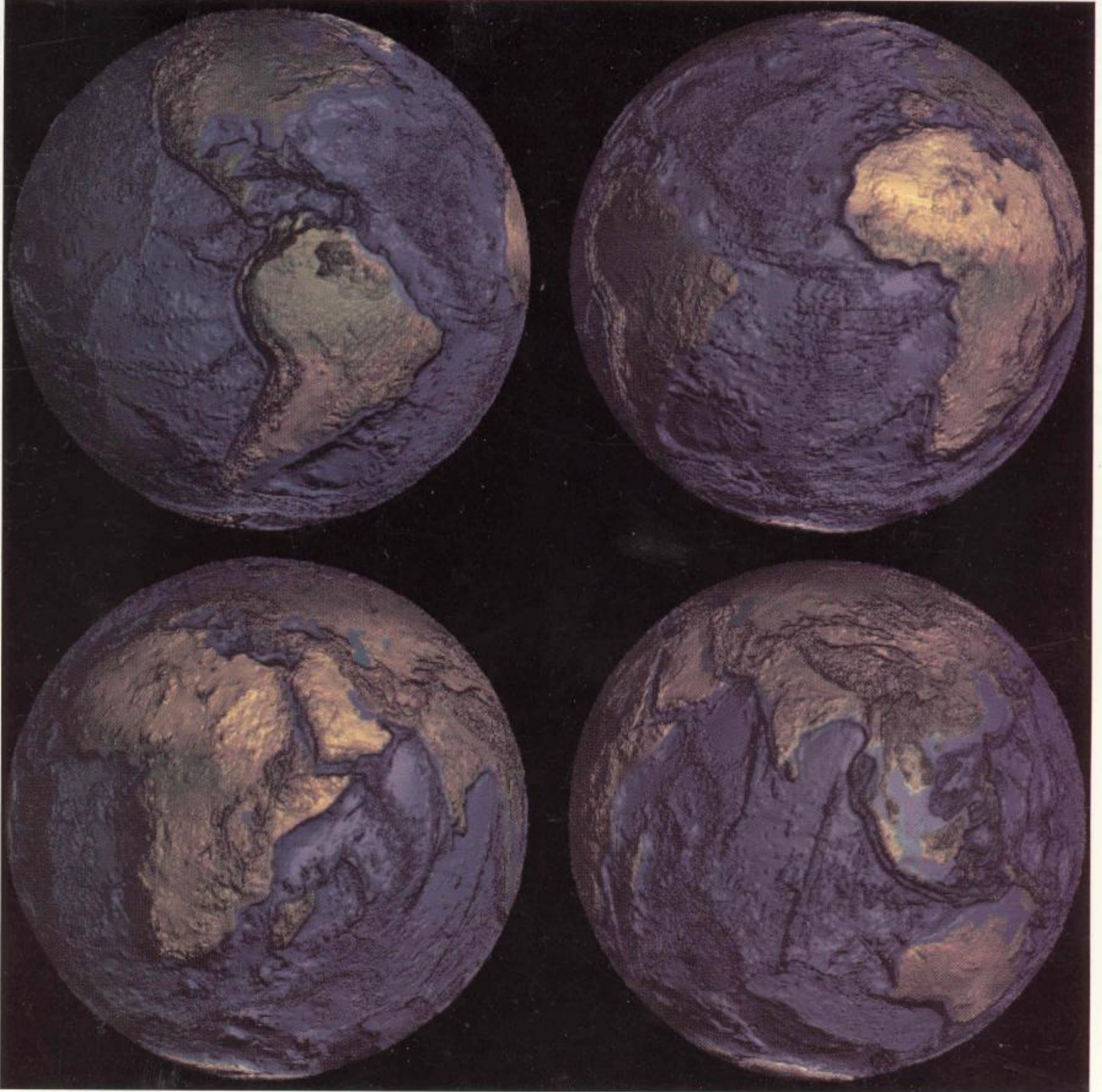




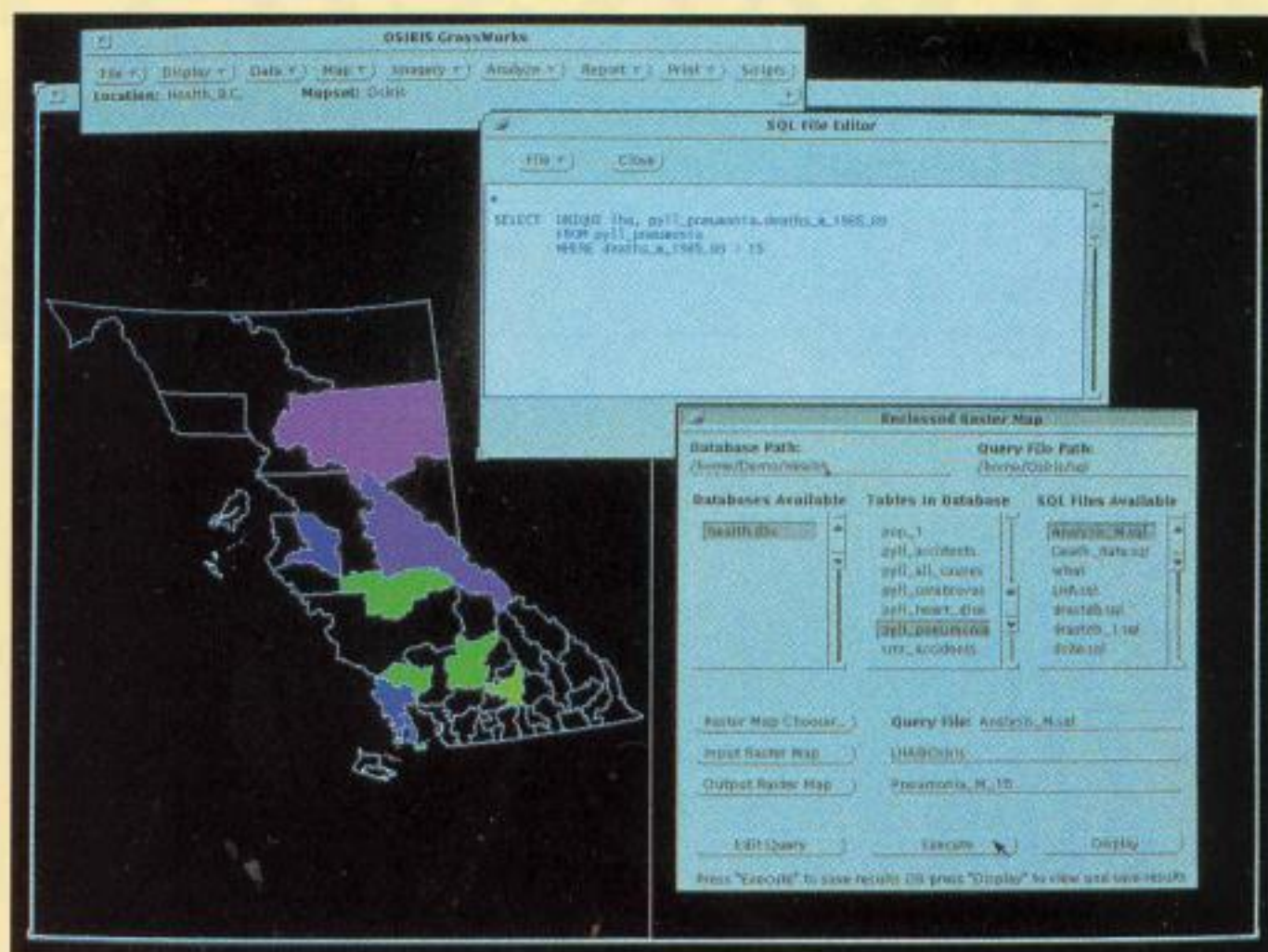
GRASSCLIPPINGS

The Journal of Open Geographic Information Systems
Winter 1992, Volume 6, Number 3



OGF

IMAGINE GRASS OF THE 1990'S



SQL!

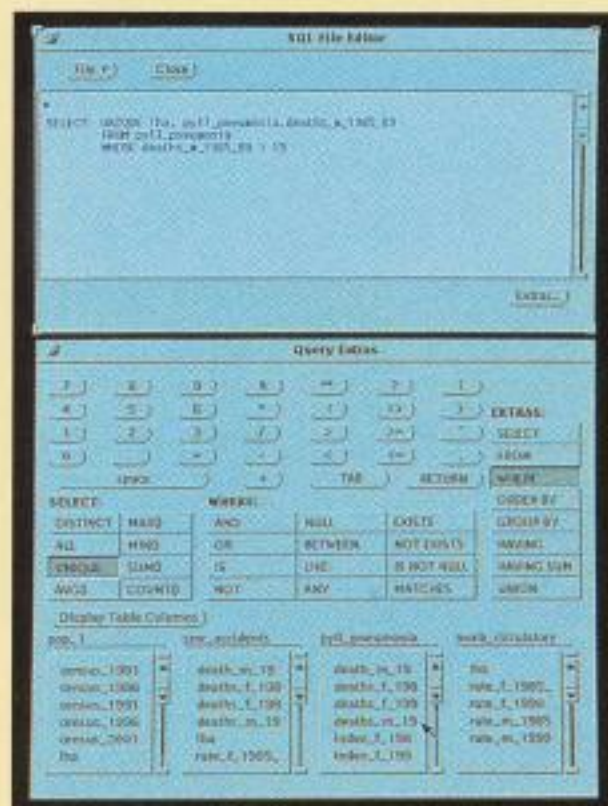
Finally, with **GrassTools/SQL™** you have the power of SQL to solve your most difficult problems. Corporate Databases can now be used easily and effectively as part of the GIS solution through the use of this industry standard tool.

In keeping with the Osiris tradition; sophisticated users will find **GrassTools/SQL™** comprehensive enough for the most demanding expert, yet simple enough for the casual or novice user.

Wait no longer to bring Relational Database Technology to bear in the Display or Query of Raster, Vector or Site data. Maps can be analyzed or database Statistics can be gathered to answer pressing questions.

GrassTools/SQL™ can support multiple Databases, any one of which can be selected from a scrolling list on the fly. Tables associated with the selected Database are also displayed for your convenience. SQL Queries can be saved and recalled

later quickly. Maps are selected in the same easy way. Point and click!



Need to build a new query or edit an old one? No problem. A feature rich integrated editing window is available at the touch of a button. Novice users will find the "extras" panel most helpful. Buttons and scrolling lists are designed to guide and prompt the user through the formulation of a query. Tables of interest and their respective columns are presented in a clear and concise manner. They may be selected and inserted in the desired location within the editing window at the touch of a button.

GrassTools/SQL™ is a unique product available immediately and included in **GrassWorks™** from Osiris Systems Corporation.

THE FUTURE OF GRASS IS HERE TODAY!



GrassWorks™

GEOGRAPHICAL INFORMATION SYSTEMS

Osiris Systems Corporation

8846 Carmanah Terrace

Sidney, B.C. Canada, V8L 5E9

Phone (604) 655-4484 Fax (604) 655-4411



Grass™ is a trademark of USACERL, GrassWare™, GrassWorks™, GrassTools™ and GrassPak™ are trademarks of Osiris Systems Corp.

GREETINGS FROM THE OPEN GRASS FOUNDATION

The Open GRASS Foundation (OGF) inherits the short but rich tradition of the *GRASS* Inter-Agency Steering Committee (GIASC) and the *GRASS* GIS User Forum (GGUF). In this first OGF issue of *GRASSCLIPPINGS*, we wish to show our intention to continue working in that tradition and to create an even more active forum for the exchange of ideas and information vital to the development of the *GRASS* community and the cause of open Geographic Information Systems (GISs).

OGF came into existence because many people in the GIS community believe profoundly that *GRASS* represents a major trend in the use of software resources. *GRASS* is an open, free development system, available in source code form, and already widely used by end-users and GIS software vendors alike. It is very close to becoming a GIS software common-denominator because of its extensive source-level integration with other software tools and applications and because of

its broad acceptance in universities as a resource in both teaching and development. Like *UNIX* in the 1980's, *GRASS* has "caught on" and, driven by enthusiasm and a pure creative energy, it has begun to set a standard for the open GIS development environment. Researchers and business people alike are beginning to feel that resources like *GRASS* provide the basic tools for GIS development and, in times like these, nothing could make more sense either from a financial or technical point of view. This is the message we hope to convey in the current and future issues of *GRASSCLIPPINGS*! We intend to catalog the technical developments of the *GRASS* community and to promote awareness of the extent and quality of *GRASS*-based application systems successfully installed both nationally and internationally.

OGF is concerned with ideas; therefore, we will focus significant resources on making *GRASSCLIPPINGS* a strong and disciplined voice on behalf of *GRASS*.

OGF is also concerned with the commercial promotion of open GIS; hence, we will focus on the annual *GRASS* GIS Users' Conference and Exhibition and joint commercial ventures involving *GRASS*. The user meeting, like *GRASS-CLIPPINGS*, will be an active demonstration of the state of open GIS. Through our combined, community-wide efforts, we will showcase a broad range of software integrations and *GRASS*-based application systems.

Although some of what you will read in these pages is new, much concerns ideas that have been brewing in the *GRASS* community for some time. What is definitely new, and what we wish to emphasize, is that the world of open GIS is beginning to come into its own, and is generating a creative and dynamic market force that will have to be reckoned with.

David Schell, Chairman, OGF

YES ! SEND ME GRASSCLIPPINGS

Name: _____ Organization: _____

Street Address: _____

City/State/Zip/Country: _____

Telephone: _____ Fax: _____

Email: _____

For our files: Do you have *GRASS*? yes / no Which version? _____

On what hardware platform do you run *GRASS* (e.g. SUN 4, IBM RISC)? _____

People living within the United States may help defray publication and mailing costs by sending an annual \$15 subscription fee. This fee is mandatory for overseas subscriptions. Please make checks payable to *The Open GRASS Foundation* and mail to OGF, Pamela Cashman, Center for Remote Sensing, Boston University, 725 Commonwealth Ave., Boston, MA 02215; 617-353-5642; fax: 617-353-3200.

*The
Editor's
Mark
From Linda Roush*

Well Folks, here it is -- the first issue of *GRASSCLIPPINGS* as a journal! And what a flurry of activity this journal produced! I hope you find the end result stimulating and resourceful.

As a journal, *GRASSCLIPPINGS* will retain many of the qualities developed during the five years it was published as a newsletter. It will continue to feature columns written by contributing editors, application articles from *GRASS* users, and programming tips from developers and programmers. Some of you might

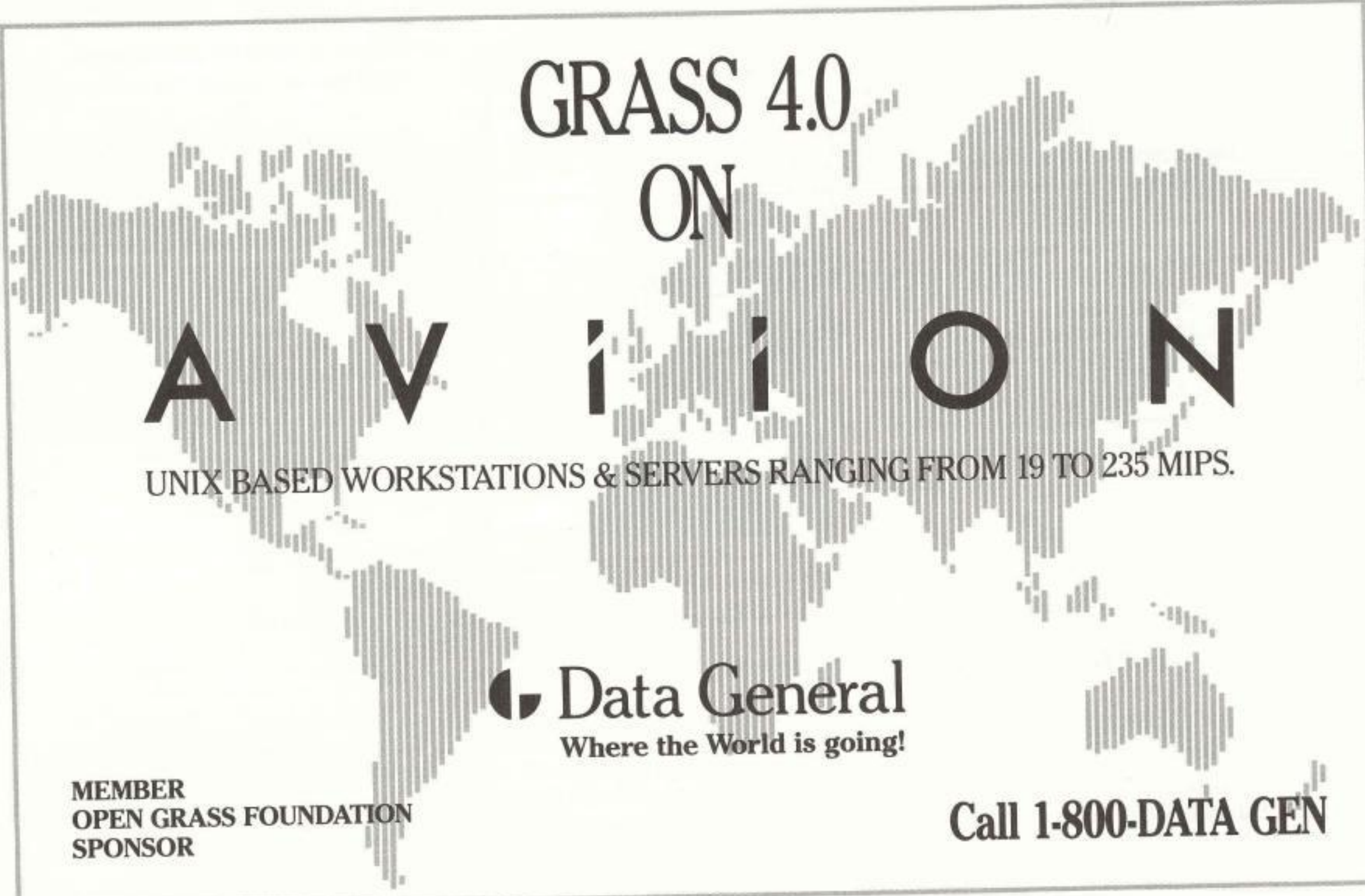
notice the absence of certain columns you've grown accustomed to reading each issue, such as **Academic Turf** by *Jeff Wright* and **Cartographic Issues** by *Melissa Records*. Their omission is nothing more than a result of the authors' busy, productive lives, and you may look forward to reading their columns in future issues.

I have encouraged longer, more technical feature articles and columns and an expanded section for *GRASS* activities around the world. As evidenced by the new section entitled **Corporate Developments**, *GRASSCLIPPINGS* has expanded also to reflect the *GRASS* community's increased commercial nature. In the future, I plan to include the *European GRASS Community Newsletter* (published by the *European Grass Foundation* (EGF)), more newsbriefs, more special-interest columns, and a Calendar of Events relevant to GIS activities in general.

GRASSCLIPPINGS provides a forum for the discussion of products, issues, and events of interest to *GRASS*/GIS users and developers. It includes features of both a commercial trade magazine and a technical journal. We invite the submission of articles, advertisements, and announcements specific to *GRASS*. Also welcome are items of general interest to GIS users, such as software tricks, applications, and discussions of controversial developments.


I extend a sincere thank you to all the people who have contributed to this issue of *GRASSCLIPPINGS*. I also thank my husband and daughter for their patience and understanding.

Linda Roush, Managing Editor
The Open GRASS Foundation
P.O. Box 3879, Champaign, IL 61826-3879; 217-352-6511; Fax: 217-373-7222;
email: roush@zorro.cecer.army.mil



**GRASS 4.0
ON
AVIATION**

UNIX BASED WORKSTATIONS & SERVERS RANGING FROM 19 TO 235 MIPS.

 **Data General**
Where the World is going!

MEMBER
OPEN GRASS FOUNDATION
SPONSOR

Call 1-800-DATA GEN



GRASSCLIPPINGS

The Journal of Open Geographic Information Systems
Winter 1992, Volume 6, #3

Managing Editor: Linda Roush

Editorial Assistants: Dina Gutierrez and Mary Martin

Graphics Editor: Melissa Records

Technical Assistance: Kurt Buehler, Laura Harmet, Connie Raaymakers, and Jeffrey Wallace

Editorial Advisory Board: Bill Goran, Marji Larson, and David Schell

Reviewers: Scott Madry and Michael Shapiro

Publisher: The Open GRASS Foundation

The Open GRASS Foundation
Center for Remote Sensing
Boston University
725 Commonwealth Ave.,
Boston MA 02215
617-353-5642

OGF Board of Directors

David Schell, Chairman
Fred Limp (CAST)
Kenn Gardels (Berkeley)
Quentin Ellis (PCI)
Ed Escowitz (USGS)
Emil Horvath (SCS)
Scott Madry (Rutgers)

"GRASSCLIPPINGS" is a periodic publication of The Open GRASS Foundation, a not-for-profit corporation. The purpose of this journal is to provide information about the Geographical Resource Analysis Support Systems (GRASS) software and to provide a forum for the promotion of open geographic information systems in general. Although GRASS is developed at the U.S. Army Construction Engineering Research Laboratory (USACERL), opinions expressed and advertisements placed herein are not to be considered an official expression or endorsement by USACERL. Reproductions of its contents is prohibited without express written permission from the editor. Copyright 1992, The Open GRASS Foundation. Articles, advertisements, inquires, and comments are welcome and should be addressed to: GRASSCLIPPINGS, c/o Linda Roush, Managing Editor, P.O. Box 3879, Champaign, IL 61826-3879; 217-352-6511 ext. 670.

This issue was produced on a Sun IPC (TM) with FrameMaker (TM).
ISSN 0899-7853

Features

An English-Language Interface to GRASS 31
Dr. Susan Walker Toledo

The current system has been designed to allow NASA Stennis to accomplish most of the currently envisioned, rocket engine test environmental monitoring tasks on its GRASS system with the use of English-language commands.

Next Generation Geographic Modeling Framework Research At USACERL..... 35
Kurt Buehler, Jeffrey Wallace, Michael Shapiro, Nancy Amato, and Unni Narayanan

This article reports on research into a next generation of Geographic Modeling Frameworks (GMF), which is part of USACERL-funded basic research.

Sequoia 2000 and the Post-GRASS Project..... 40
Kenn Gardels

Current technology for information management limits the ability of global change researchers to model change and the inter-relationship of earth systems. The goal of the Sequoia 2000 Project is to meet these technological challenges head-on.

Columns

New GRASS Seeds *Bill Goran*6
OGI Updates..... *Marji Larson*7
Training and Workshops *Brenda Johnson*9
Agency News..... *Linda Roush*11
Growing GRASS *Dr. Fred Limp*12
Mission to Planet Earth *Robert Lozar and Scott Madry*14
Surfaces and Modeling *Dr. Helena Mitsova*16
Around the World..... *Linda Roush*21

Corporate Developments

Education and Consulting at Bureau Nieuwland..... *Wim Ploeg*23
EuroGIS Develops the GRASS Markets in Spain *David Schell*24
GRASS Activities at L.A.S., Inc., Montreal *Gilles Clement*25
Bringing Digital Remote Sensing to GIS *Peter Archibald*26
An On-line Data Management System..... *Jim Ramsey*28

Departments

Greetings from The Open GRASS Foundation *David Schell*3
The Editor's Mark *Linda Roush*4
Conference Announcement29
Instructions to Authors *Linda Roush and Melissa Records*34

Submission deadline for GRASSCLIPPINGS, Summer 1993 April 5, 1993
Cover graphic designed by Bill Brown (USACERL) using SG3d and GRASS.